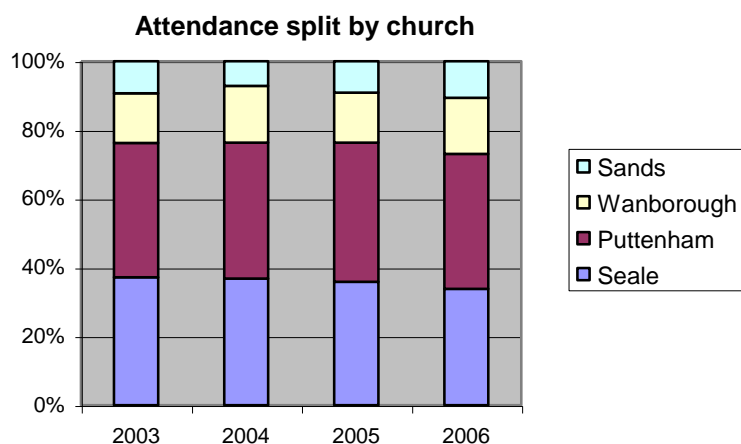
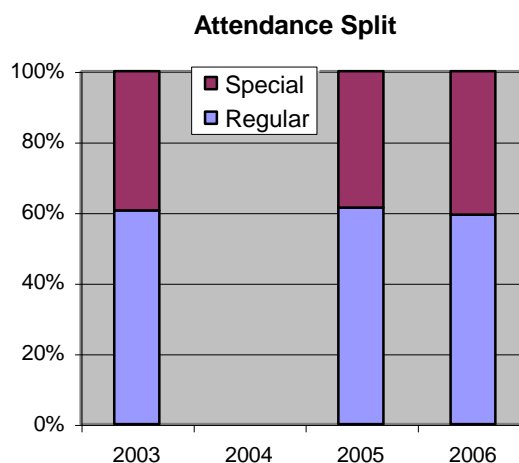
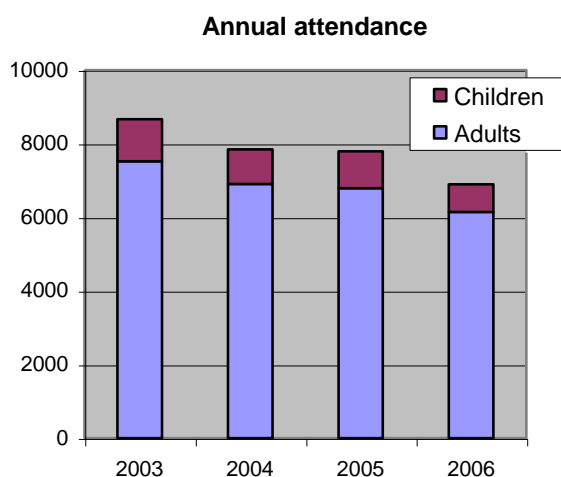


Parish of Seale, Puttenham and Wanborough

Analysis of attendance 2006

Total attendance

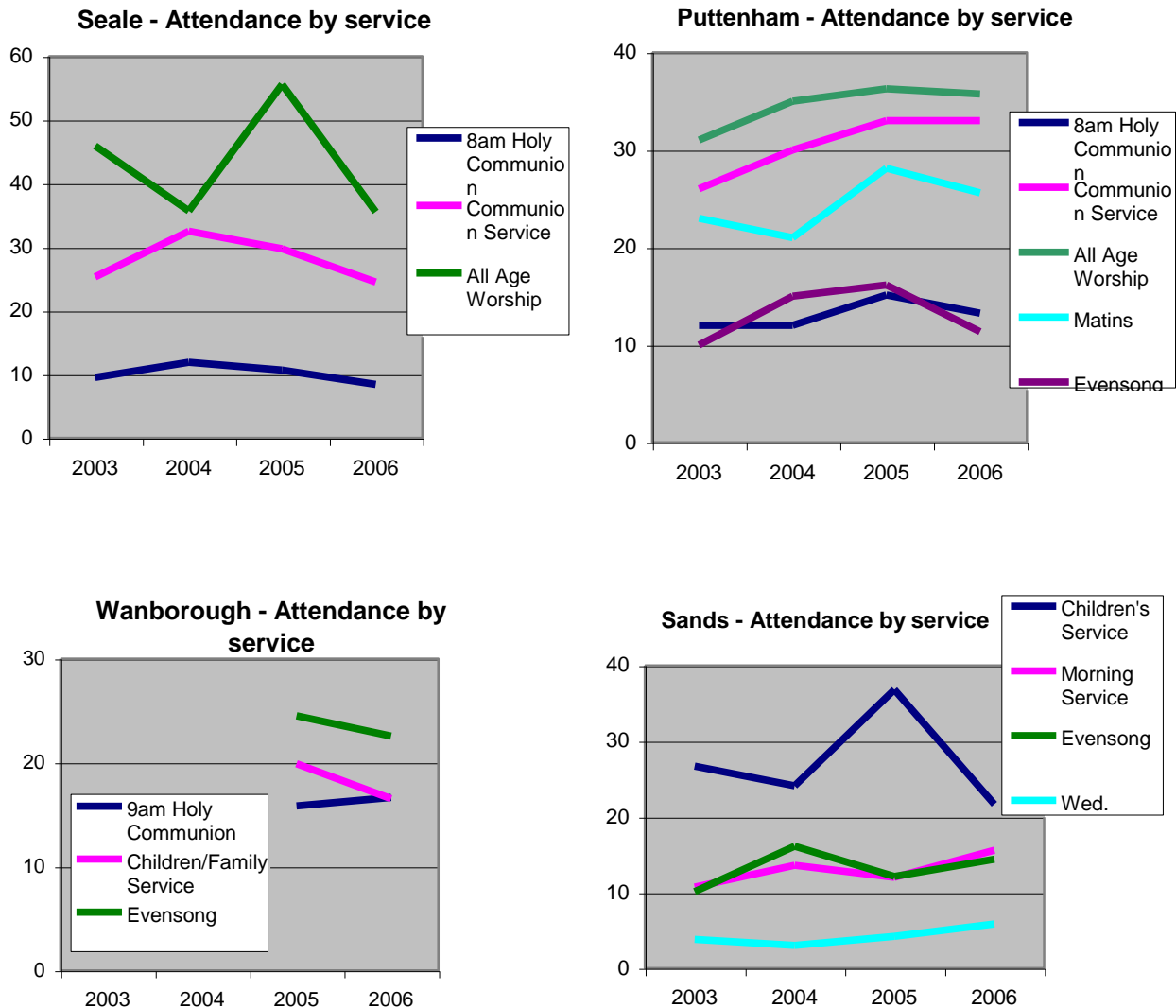
- The total attendance in 2006 was 6895, 12% lower than in 2005. There has been a steady decline over the last four years. The reduction may owe in part to the reduced number of services: there were 4% fewer than in 2005 and 30% fewer than four years ago.
- The attendance of children fell by 26% to 747. Apart from 2005, there has also been a steady decline in children attendance over several years.
- 60% of the annual attendance was at 'special' services, that is, services on festival days or to celebrate a special occasion or united services. The split mirrored that of prior years. Interestingly, less than 1 in 5 services were 'specials'.
- Seale has seen a diminishing share of the total attendance over the past four years to a current share of 34%. Puttenham and Wanborough shares have remained steady at around 40% and 16%, whilst at Sands, the share has risen over the past three years to 11%.



Full details of attendance data are given in Table 1. The attendance split for 2004 is not readily available. Information on the numbers of services conducted is given in Table 2.

Attendance at each type of service

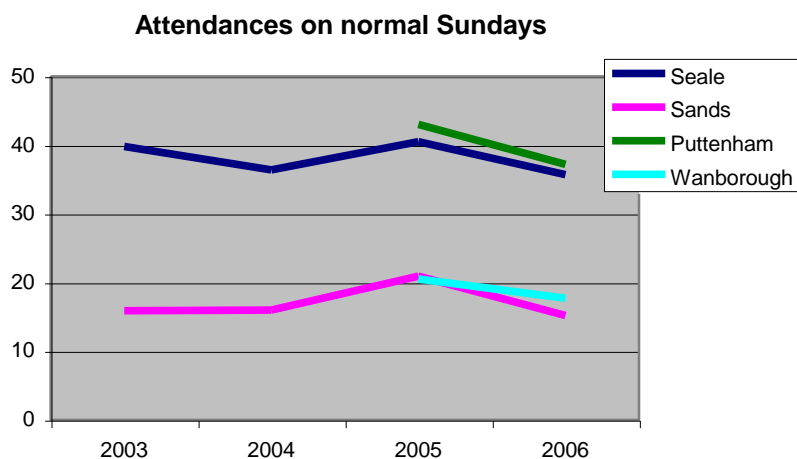
The attendance at each type of service in each church is shown in the charts below. The breakdown of information for Wanborough in earlier years has not been collated.



- Seale:** The average attendance at All-age Worship (previously Family Communion) has fallen from a high in 2005 to the level it was at in 2004. Attendances at both the 8am Holy Communion and the later Communion Service have declined over the last three years and are now at their lowest levels for 4 years.
- Puttenham:** Congregation sizes at All-age Worship and the Communion Service were similar to those in 2005 and higher than in prior years. At the other services, there was a fall-off in attendance, though it was still higher than 3-4 years ago.
- Wanborough:** Attendances at Evensong and the Children's Service were lower than in 2004, and higher at Holy Communion. With only 2 years of data collated, it is unclear whether these changes represent underlying trends.
- Sands:** The number attending the Children's Service was at its lowest for 4 years. There is an underlying trend to larger congregations, albeit still small, at each of the other types of service.

Attendance on 'normal' Sundays

A 'normal' Sunday at a church is defined as one on which there is at least one service held, and on which there is no Special Service drawing people from across the parish. In effect they are business-as-usual Sundays. Data for Puttenham and Wanborough were not collated in this way for before 2005. Details are provided in Table 4.



- Attendances at each of the major churches were broadly similar over the past two years, and also at the two smaller churches.
- At all churches the attendance on a normal Sunday was lower than in the previous year.

Special Services

Congregations at 46 'special' services are set out in Table 5. Numbers attending in previous years when there was an equivalent service are also shown.

- Once again the Crib Services were the best attended in the year. The high turnout for the popular Candlelight Carols at Wanborough meant there was standing room only for many people.
- Six services had attendances exceeding 100, and a further 17 had 60 or more worshippers.
- Overall, attendances at 'special' services are somewhat lower than they were in years past.

Concluding remarks

- The declining church attendance in the parish must be of some concern. Admittedly there have been changes in demography, with more young families moving into our villages. But the number of young children attending church has also declined.
- Attendance at 'special' services demonstrates the potential catchment.
- The revival in attendance at most services in Sands is interesting. Might this owe to the concern that was around that the church's continuing existence was under threat?

Table 1 - Total attendance

SEALE		2003	2004	2005	2006
Normal services	Adults	1529	1431	1451	1153
	Children	118	146	147	90
	All	<u>1647</u>	<u>1577</u>	<u>1598</u>	1243
Special services	Adults	1356	1107	984	909
	Children	221	207	213	183
	All	<u>1577</u>	<u>1314</u>	<u>1197</u>	1092
Total	Adults	2885	2538	2435	2062
	Children	339	353	360	273
	All	<u>3224</u>	<u>2891</u>	<u>2795</u>	2335

PUTTENHAM		2003	2004	2005	2006
Normal services	Adults	1681	1610	1574	1365
	Children	211	172	153	121
	All	<u>1892</u>	<u>1782</u>	<u>1727</u>	1486
Special services	Adults	1231	1092	1180	1027
	Children	264	226	248	192
	All	<u>1495</u>	<u>1318</u>	<u>1428</u>	1219
Total	Adults	2912	2702	2754	2392
	Children	475	398	401	313
	All	<u>3387</u>	<u>3100</u>	<u>3155</u>	2705

WANBOROUGH		2003	2004	2005	2006
Normal services	Adults	920		720	685
	Children	152		84	75
	All	<u>1072</u>		<u>804</u>	760
Special services	Adults	153		289	340
	Children	25		41	23
	All	<u>178</u>		<u>330</u>	363
Total	Adults	1073	1200	1009	1025
	Children	177	92	125	98
	All	<u>1250</u>	<u>1292</u>	<u>1134</u>	1123

SANDS		2003	2004	2005	2006
Normal services	Adults	531	415	532	553
	Children	108	97	120	49
	All	<u>639</u>	<u>512</u>	<u>652</u>	602
Special services	Adults	121	50	60	116
	Children	48	0	0	14
	All	<u>169</u>	<u>50</u>	<u>60</u>	130
Total	Adults	652	465	592	669
	Children	156	97	120	63
	All	<u>808</u>	<u>562</u>	<u>712</u>	732

PARISH TOTAL		2003	2004	2005	2006
Normal services	Adults	4661		4277	3756
	Children	589		504	335
	All	<u>5250</u>		<u>4781</u>	4091
Special services	Adults	2861		2513	2392
	Children	558		502	412
	All	<u>3419</u>		<u>3015</u>	2804
Total	Adults	7522	6905	6790	6148
	Children	1147	940	1006	747

Table 2 - Number of services held

	Seale	Sands	Puttenham	Wanborough	Total
Normal services	58	43	64	43	208
Special services	16	6	18	8	48
Total	74	49	82	51	256
2005	78	44	86	59	267
2004	82	42	100	60	284
2003	108	58	132	65	363

Table 3 - Average attendance at services

SEALE		2003	2004	2005	2006
Holy Communion (8am)	All	9.5	11.9	10.7	8.4
Communion Service	All	25.3	32.5	29.8	24.5
All Age Worship / Family Service	Adults			42.3	28.4
	Children			13.2	7.1
	All	45.9	35.7	55.6	35.6
Songs of Praise	All	-	31.4	24.8	14.0
Evensong	All	15.0	21.0	15.0	8.0
SANDS		2003	2004	2005	2006
Children's Service	Adults			25.0	16.8
	Children			11.8	4.9
	All	26.7	24.1	36.8	21.7
Morning Service	All	10.7	13.6	12.0	15.6
Evensong	All	10.1	16.1	12.1	14.4
Wednesday Communion	All	3.8	3.0	4.2	5.8
PUTTENHAM		2003	2004	2005	2006
Holy Communion (8am)	All	12	12	15.1	13.2
Communion Service	All	26	30	33.0	33.0
All Age Worship / Family Service	Adults			26.7	27.9
	Children			9.5	7.9
	All	31	35	36.3	35.8
Matins	All	23	21	28.1	25.6
Evensong	All	10	15	16.1	11.4
WANBOROUGH		2003	2004	2005	2006
Holy Communion (9am)	All			15.8	16.6
Children's / Family Service	Adults			11.6	9.7
	Children			8.3	6.8
	All			19.9	16.5
Evensong	All			24.5	22.6

Table 4 - Average attendance on Normal Sundays

	2003	2004	2005	2006
Seale	39.8	36.4	40.5	35.7
Sands	15.9	16.0	20.9	15.2
Puttenham			43.0	37.2
Wanborough			20.5	17.7
Total			124.9	105.8

Table 5 - Attendance at Special Services

		2006	2005	2004	2003
Puttenham	Crib Service	198	200	179	128
Seale	Crib Service	150	190	110	144
Seale	Easter Family Service	112	101	178	141
Wanborough	Candlelight Carols	108	98		75
Seale	Christmas Family Communion	100	121	130	148
Seale	Remembrance Service	100	101	115	160
Puttenham	Lessons & Carols	94	134	104	124
Seale	Carol Service	92	72	100	88
Puttenham	Christmas Family Communion	90	115	145	130
Puttenham	Faure's Requiem / Stainer's Cricifixion	80	87		96
Seale	Mothering Sunday	80	72	75	76
Puttenham	Easter Family Service	77	102	94	81
Seale	Christmas Midnight Communion	75	81	70	118
Puttenham	Remembrance Service	74	92	114	99
Puttenham	Christmas Midnight Communion	70	72	72	77
Puttenham	United Communion Service	70	61		
Puttenham	Mothering Sunday	70	51	59	78
Seale	Patronal Festival (United)	69	61		52
Puttenham	United Communion Service	66	64	85	130
Puttenham	Advent Carols	65	70	100	88
Seale	Harvest Festival	63	65		
Seale	United Choral Evensong with A/deacon	61			
Wanborough	United Communion Service	60	70	76	79
Puttenham	Patronal Festival	58	45	49	33
Puttenham	Patronal Festival	58			
Seale	R Wood 25 yr celebration (Comm. Serv.)	55			
Wanborough	All Saints (United Sevice)	54			
Puttenham	Harvest Festival	48	54	77	94
Seale	Gift Service	42	72	52	74
Seale	J Grundy 40 yr celebration (8am HC)	40			
Seale	United Communion Service and family walk	39			
Wanborough	Rededication	36	37		25
Sands	Tent Service	35			90
Wanborough	Harvest Service	34	47		45
Sands	Walking the Cross	34			
Wanborough	Remembrance Service	29	31		
Puttenham	Ash Wednesday Communion	24	17	17	14
Wanborough	Christmas Holy Communion	23	16		
Puttenham	Good Friday Devotion	22	18	18	18
Seale	Ascension Service	20	29	20	20
Sands	Christmas Communion	20	15	19	21
Wanborough	Easter Communion	19	31		35
Seale	Good Friday Devotion	19	23	13	19
Sands	Easter Communion	15	14	24	17
	Easter Sunday Greet the Dawn	14	18		18